



SPECIFICATIONS

- RATING:** 50mA, 12V DC
- CONTACT RESISTANCE:** 100 mΩ MAX.
- INSULATION RESISTANCE:** 100 MΩ MIN.
- MECHANICAL LIFE:** 300,000 cycles.
- OPERATING FORCE:** 160±50g
- STROKE:** 0.25±0.10mm
- OPERATING TEMPERATURE RANGE :** -20°C to 70°C

MATERIALS

- BASE:** High Temp Thermoplastic PA66, Black.
- CAP:** High Temp Thermoplastic PA66, White.
- CAP LOCK:** High Temp Thermoplastic PC, White.
- STEM:** High Temp Thermoplastic PBT.
- CONTACT :** Stainless Steel SUS301, With silver cladding
- TERMINALS :** Brass, With silver plating.

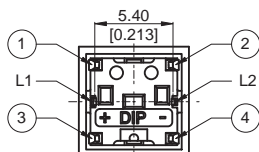
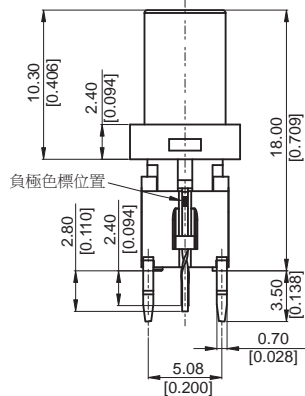
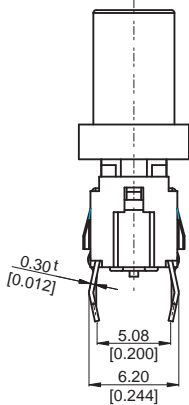
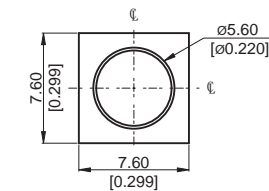
HOW TO ORDER

PROD. NO. : M **6 - H** **T 2** **Q A**

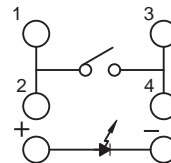
- =Without LED
- L=TACT Switch +LED
- Solder Type: _____
- H= Through hole
- 0=Without Cap
- 2= Cap Type : Round
- Cap Finish _____
- See Note
- Operation Force: _____
- 2 = 160gf
- =Without LED
- LED Color
- B=Blue Y=Yellow G=Green R=Red
- Q=Halogen Free
- Package: _____
- A= TRAY

DIMENSION

ML6-H2T2BQA



CIRCUIT



P.C.B LAYOUT

