

MSS Series

Slide Switches

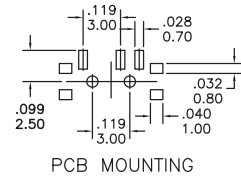
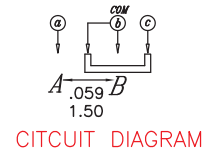
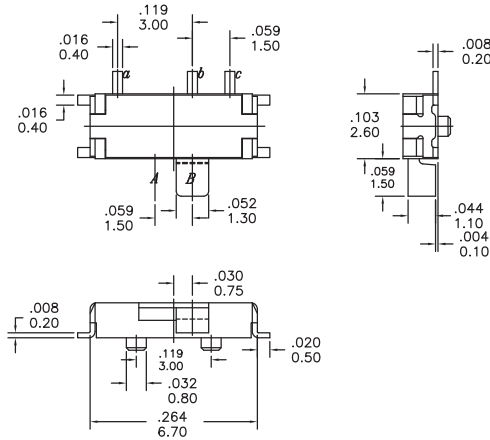
SPECIFICATIONS

ELECTRICAL LIFE: 10,000 cycles
 CONTACT RATING: Switch :100M Ω max
 INSULATION RESISTANCE: 100M Ω min @ 500 VDC.
 CONTACT RESISTANCE: Initial : 50m Ω @ 2-4VDC @ 100mA.
 DIELECTRIC STRENGTH: 500 VAC/1minute.
 CAPACITANCE: 5pf max.
 TEMPERATURE RANGE: Operating/Storage : -20°C to+ 70°C.
 VIBRATION: To MIL-STD-202F. Method 201A.
 SHOCK: To MIL-STD-202F. Method 213B, Condition A.

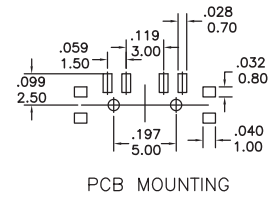
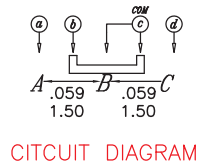
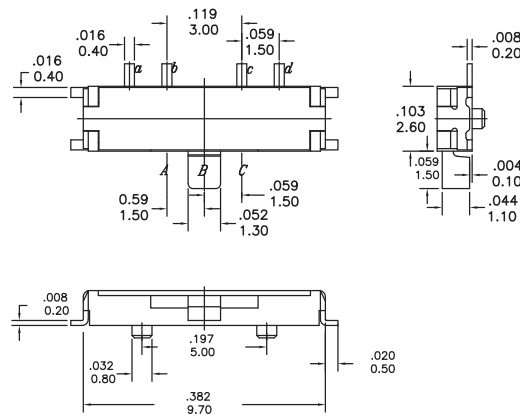
MODEL OPTIONS



MSS3



MSS4



MSS6

