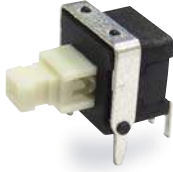


# PS508 Series

Pushbutton Switches



## SPECIFICATIONS

**OPERATION:** NON-LOCK

**RATING:** 12 V DC, 50mA

**CONTACT RESISTANCE:** 100 mΩ MAX.

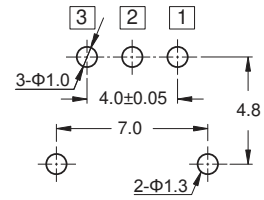
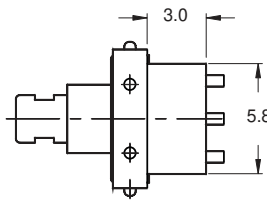
**INSULATION RESISTANCE:** 500 V DC, 100MΩ MIN.

**OPERATING FORCE:** 250 ± 50gf

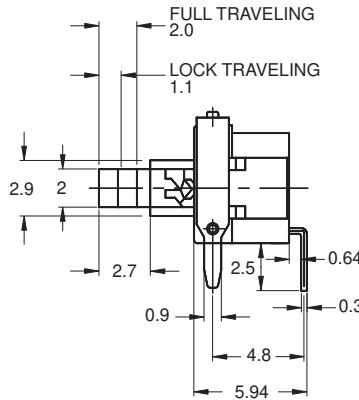
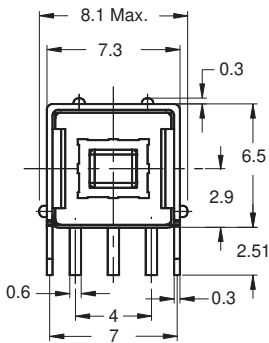
**OPERATION TEMPERATURE RANGE:** -20°C~+70°C

**OPERATION LIFE:** 50,000 CYCLES

## SCHEMATIC

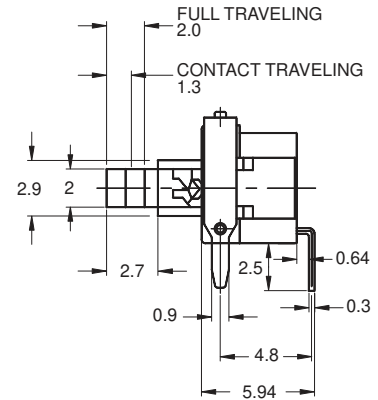


P.C.B LAYOUT



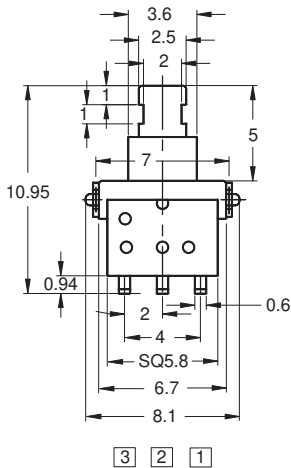
**LOCK**

Part No. shown: PS058AHP-LR-R



**NO LOCK**

Part No. shown: PS058AHP-NR-R



7	TERMINAL	BRASS	2	SILVER PLATING
6	COVER BUSHING	SUS	1	
5	SPRING	SUS	1	
4	CONTACT	COPPER ALLOY	1	SILVER PLATING
3	BASE	NYLON	1	
2	COVER	NYLON	1	
1	KNOB	NYLON	1	
NO.	PARTS	MATERIALS	Q'TY	FINISH

3 2 1