

# RH RV RM Series

Rotary Code Switches

## SPECIFICATIONS

**Voltage Proof:** 250VAC for 1 minute.

**Switching Rating:** 24VDC, 25mA.

**Non-Switching Rating:** 100mA, 50VDC.

**Contact Resistance:** (a) 100mΩ max. (Initial) (b) 200mΩ (final-after test)

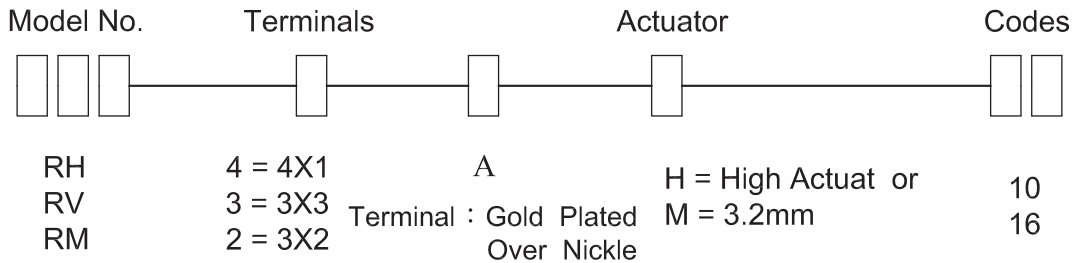
**Insulation Resistance:** 100MΩ min, at 250VDC.

**Operating Temperature Range:** -25°C to 80°C.

**Solderability:** 230 ± 5°C 3± sec. 75%

**Electrical Life :** 200mΩ max, 20000 steps.

## HOW TO ORDER



## CIRCUIT CHART

TYPE	POSITION	CODE			
		1	2	4	8
○10 (H)	0	●	●	●	●
	1	○	●	●	●
	2	●	○	●	●
	3	○	○	●	●
	4	●	●	○	●
	5	○	●	○	●
	6	●	○	○	●
	7	○	○	○	●
	8	●	●	●	○
	9	○	●	●	○
○16 (H)	A	●	○	●	○
	B	○	○	●	○
	C	●	●	○	○
	D	○	●	○	○
	E	●	○	○	○
	F	○	○	○	○

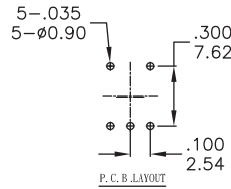
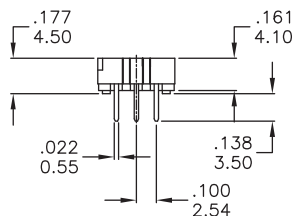
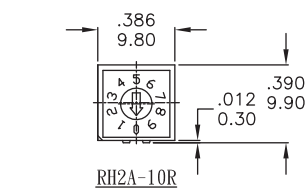
TYPE	POSITION	CODE			
		1	2	4	8
10 STEP	0	○	●	●	●
	1	○	○	●	●
	2	●	○	●	●
	3	○	○	●	●
	4	●	●	○	●
	5	○	●	○	●
	6	●	○	○	●
	7	○	○	○	●
	8	●	●	●	○
	9	○	●	●	○
16 STEP	A	○	○	●	○
	B	○	○	●	○
	C	●	●	○	○
	D	○	●	○	○
	E	●	○	○	○
	F	○	○	○	○

TYPE	POSITION	CODE			
		1	2	4	8
10 R	0	●	●	●	●
	1	○	○	●	●
	2	●	○	●	●
	3	○	○	●	●
	4	●	●	○	●
	5	○	●	○	●
	6	●	○	○	●
	7	○	○	○	●
	8	●	●	●	○
	9	○	●	●	○
16 R	A	●	○	●	○
	B	○	○	●	○
	C	●	●	○	○
	D	○	●	○	○
	E	●	○	○	○
	F	○	○	○	○

RH RV RM Rotary Switches



RH2A-XXX



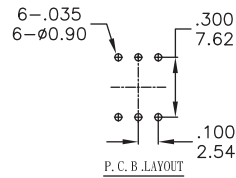
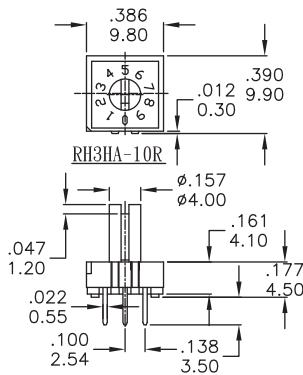
Available Mode No.  
RH2A-10R  
RH2A-16R  
RH2A-16C

# RH RV RM Series

Rotary Code Switches



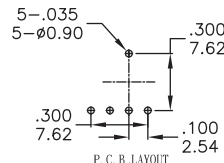
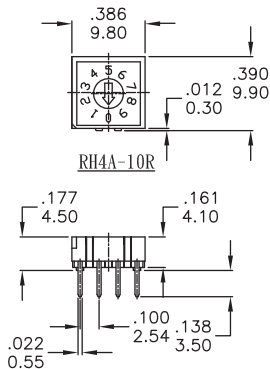
RH3HA-XXX



Available Mode No.
RH3HA-10R
RH3HA-16R
RH3HA-16C



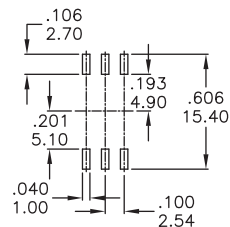
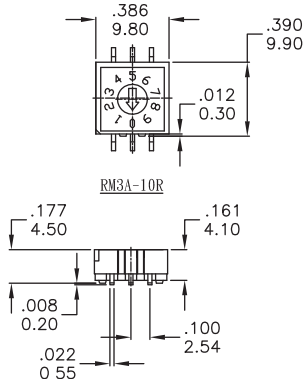
RH4A-XXX



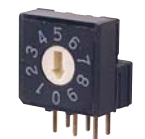
Available Mode No.
RH4A-10R
RH4A-16R
RH4A-16C



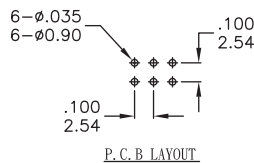
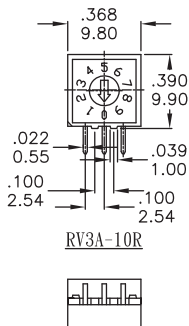
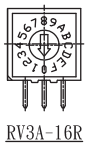
RM3A-XXX



Available Mode No.
RM3A-10R
RM3A-16R
RM3A-16C



RV3A-XXX



Available Mode No.
RV3A-10R
RV3A-16R
RV3A-16C

RH RV RM  
Rotary Switches

# RH RV RM Series

Rotary Code Switches



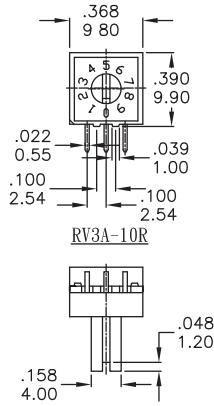
RV3HA-XXX



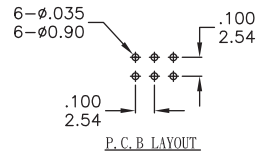
RV3A-16R



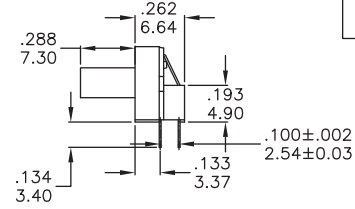
RV3A-16C



RV3A-10R



P.C.B. LAYOUT



Available Mode No.

- RV3HA-10R
- RV3HA-16R
- RV3HA-16C



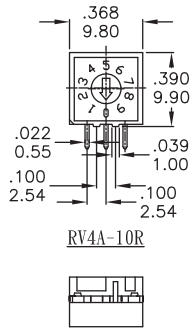
RV4A-XXX



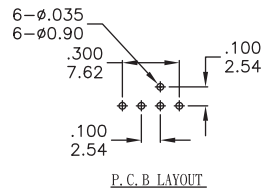
RV4A-16R



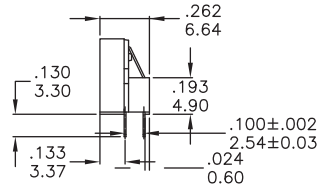
RV4A-16C



RV4A-10R



P.C.B. LAYOUT



Available Mode No.

- RV4A-10R
- RV4A-16R
- RV4A-16C